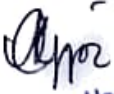


Assignment of Education
(Measurement and evaluation of Education)

Name: Dipjyoti Dehingia

Roll No - 32

Class - BA. 3rd sem
2022


Head
Deptt. of Education
H.C.D.G. College, Nitaipukhuri

Marking list.

Pre final Assessments Examination.

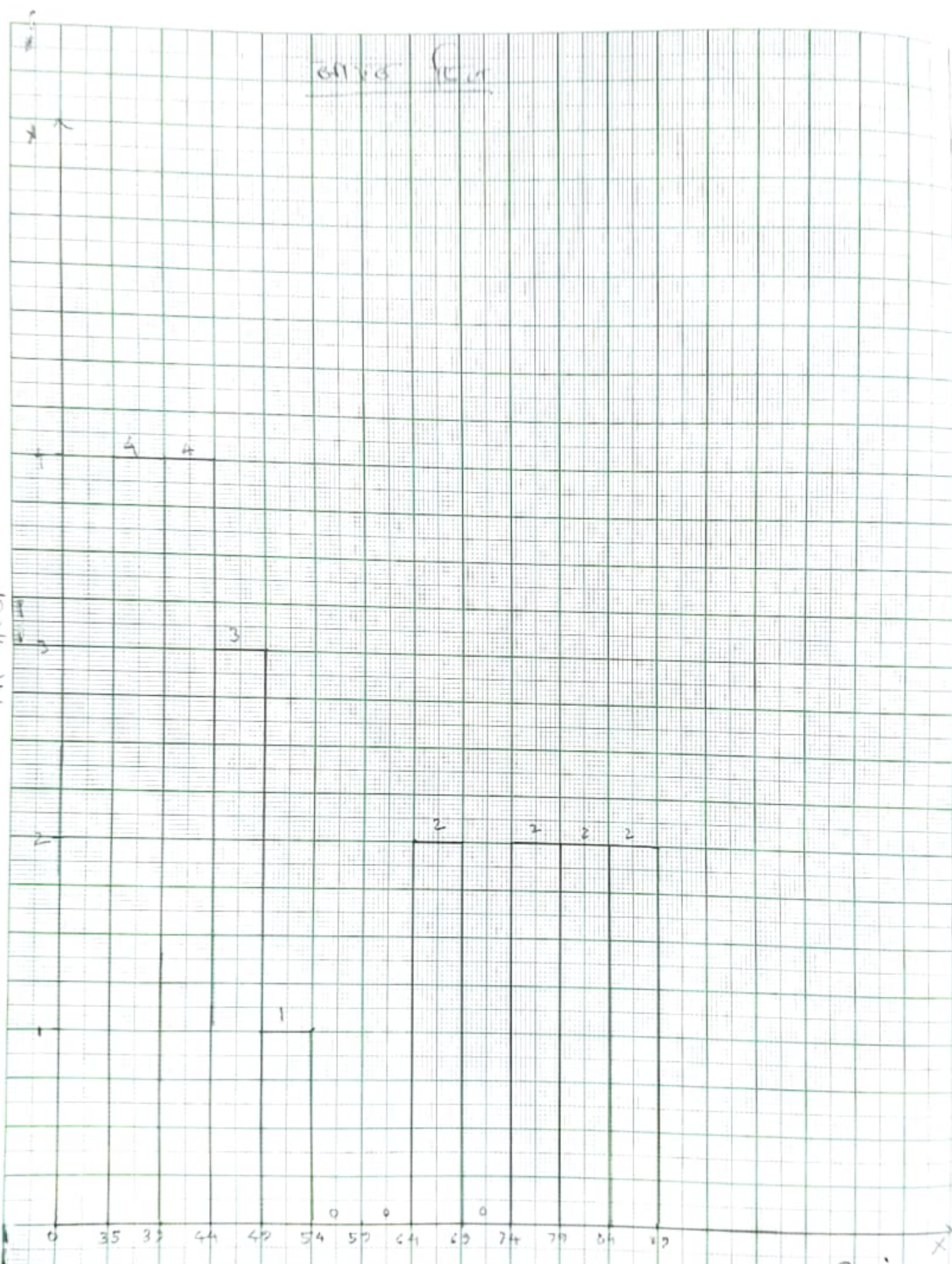
class - X

Sl no	Name of Students	Ass	Eng	Math	G.Sc	S.Sc	El.	total	%
1.	Abhijit Konwar	82	89	71	74	83	82	462	77
2.	Manalisha Dutta	80	87	77	78	59	84	465	77.5
3	Sajida Begum	74	80	74	78	51	81	438	73
4	Dibya Khariya	81	82	82	82	56	80	460	76.6
5	Rasmirekha phulkonwar	80	75	71	71	58	72	435	72.5
6	Mintu Buragohain	71	76	58	58	52	68	385	64.1
7	Jatin Chatia	68	65	69	55	45	89	382	63.6
8	Bansukharani Borah	89	68	56	65	64	58	379	65.6
9	Chiranjeev Das	52	59	50	48	44	69	317	52.8
10	Rasmirekha Borah.	64	47	49	44	46	58	308	51.3
11	Prastuti Hazarika	58	45	47	51	48	67	316	52.6
12	Bastab Chatia	50	42	63	55	46	66	322	53.6
13	Jiwani Bose	49	44	50	51	42	67	303	50.5
14	Bikash Hazarika	52	46	63	62	46	64	327	54.5
15	Partha Das	51	43	47	50	47	55	293	48.8
16	Biki Konwar	45	46	44	46	49	49	279	46.5
17	Purbali Hazarika.	47	39	62	60	43	51	302	50.3
18.	Paramanda Dutta	44	38	50	52	52	60	297	49.5
			35						
			37						

Principal
Prembhati Swamij Tatiga Vidyalaya
Nisid Pukhuri

गणित

गणित

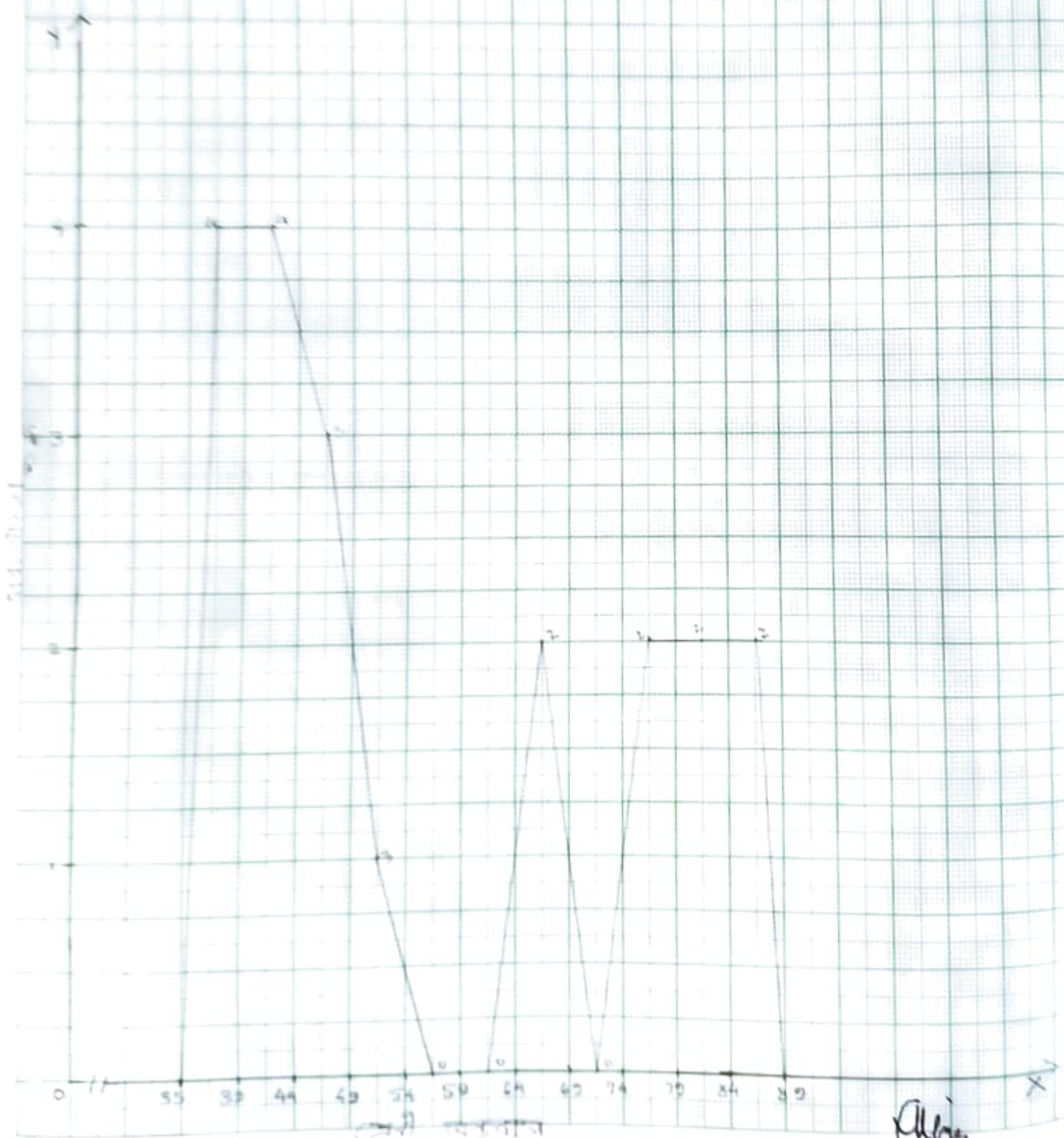


मार्च

୧।	ମାନ ଚିହ୍ନ	ପ୍ରକୃତ ସଂଖ୍ୟା
85-89	11	20
80-84	11	18
75-79	11	16
70-74		14
65-69	11	14
60-64		12
55-59		12
50-54	1	12
45-49	111	11
40-44	1111	8
35-39	1111	9

ଲକ୍ଷ ସଂଖ୍ୟା '0x' ଉପରେ କୁଡ଼ି ପର୍ଯ୍ୟନ୍ତ 10 = 5 ଏକକ ଡାହାଣ
 0y ଉପରେ କୁଡ଼ି ପର୍ଯ୍ୟନ୍ତ 40 ଟଙ୍କା = 1 ଏକକ ଡାହାଣ ଲେ
 ଯାହାକି ଏହା ଉପରେ ଉପରେ ଚିହ୍ନ ଡାହାଣ ଏହା ହିଁ ।

प्रमाणित प्रति



प्रमाणित प्रति

Alp's Head

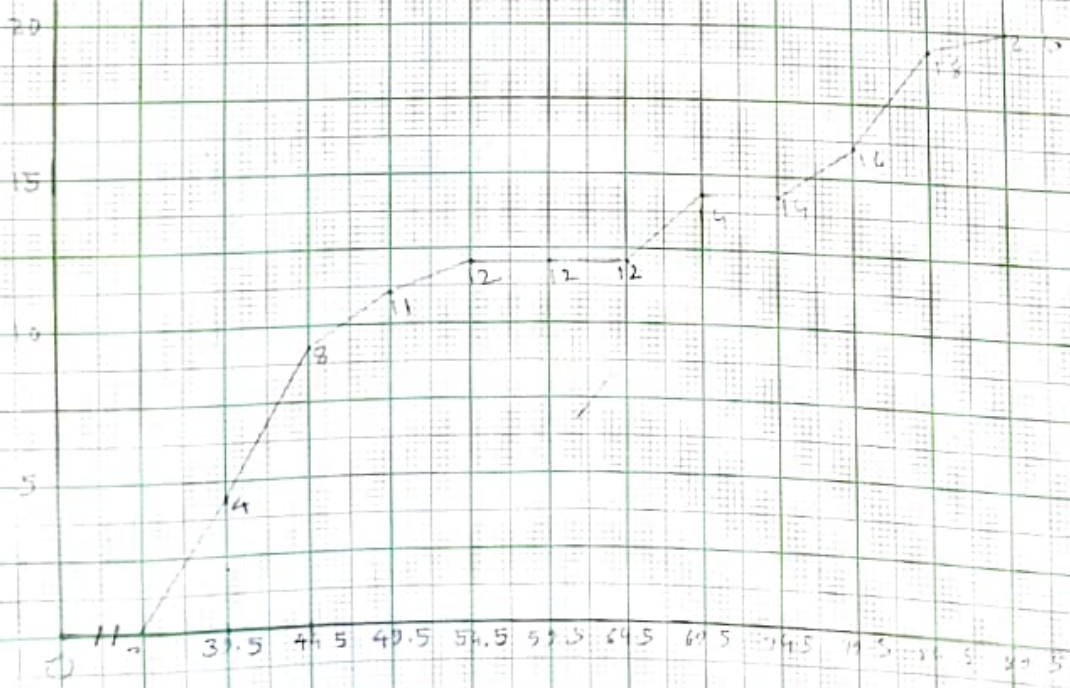
CI	ଆବେଶ ସଂଖ୍ୟା (Frequency)	ମାଧ୍ୟମିକ ଆବେଶ ସଂଖ୍ୟା
85-89	2	20
80-84	2	18
75-79	2	16
70-74	0	14
65-69	2	14
60-64	0	12
55-59	0	12
50-54	1	12
45-49	3	11
40-44	4	8
35-39	4	4
total	N=20	

ଲମ୍ବ ଆବେଶ 0x ସଂଖ୍ୟା ସ୍ଥଳ ସଂଖ୍ୟା 10 ଥର = 5 ଗୁଣିତ ଆବେଶ
 0y ଉପରେ ସ୍ଥଳ ସଂଖ୍ୟା 40 ଥର = 1 ଗୁଣିତ ସଂଖ୍ୟା ଲମ୍ବ ସଂଖ୍ୟା -
 - ଆବେଶ ସଂଖ୍ୟା ଲମ୍ବ ସଂଖ୍ୟା ଉପରେ ଥର ହିସା

Appr
 Head
 - Deptt. of Education
 H.C.D.G. College, Nitaipukhuri

(39-1) 6.5

31.5 41.5 51.5 61.5 71.5 81.5 91.5 101.5 111.5 121.5 131.5 141.5 151.5 161.5 171.5 181.5 191.5 201.5

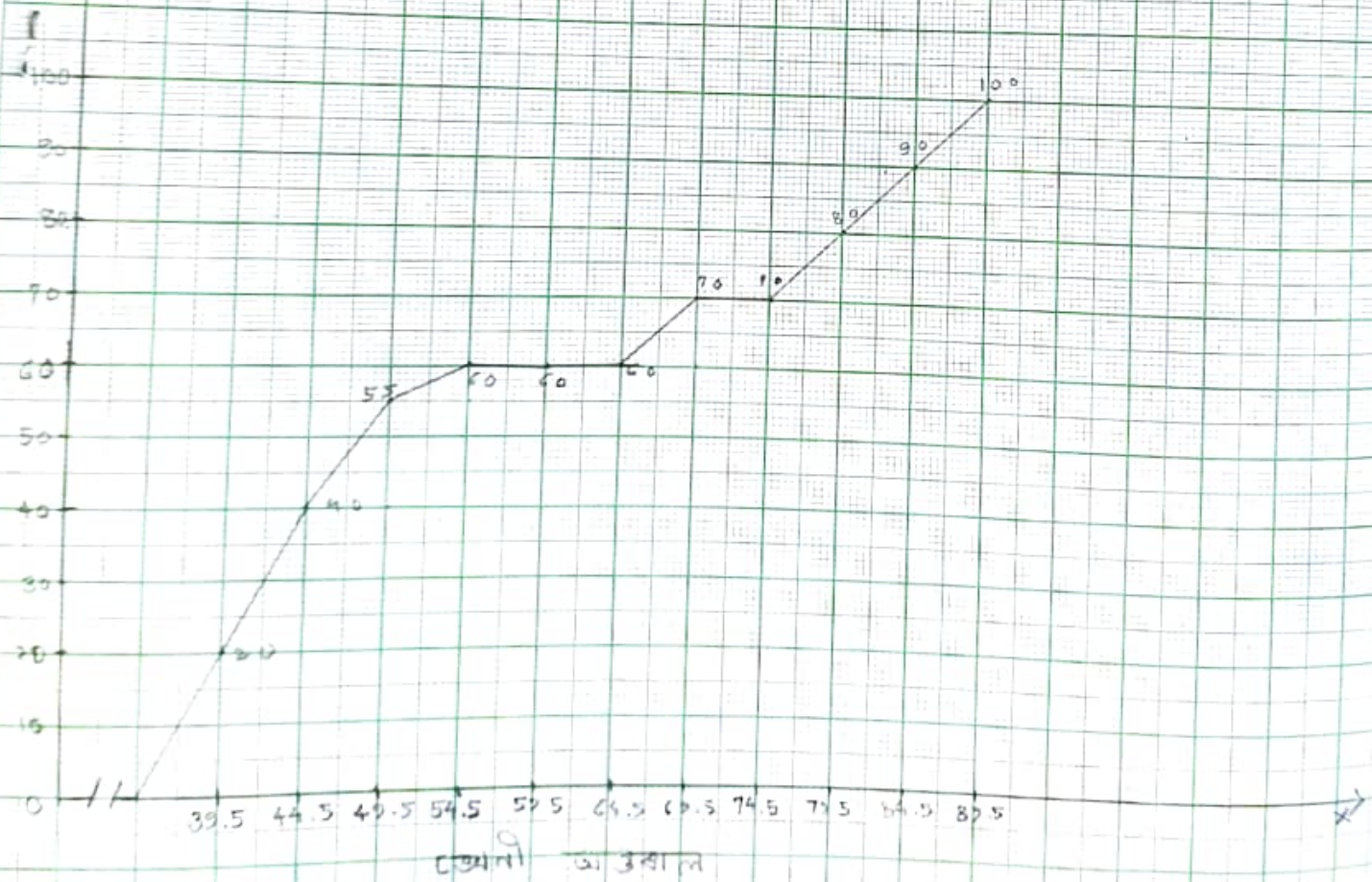


(20-1) 11.5 11.5

c_i	ଆବୃତ୍ତତା (Frequency)	କ୍ଷେତ୍ର ମଧ୍ୟମ ବିନ୍ଦୁ	ଆବୃତ୍ତତା
85-89	2	89.5	20
80-84	2	84.5	18
75-79	2	79.5	16
70-74	0	74.5	14
65-69	2	69.5	14
60-64	0	64.5	12
55-59	0	59.5	12
50-54	1	54.5	12
45-49	3	49.5	11
40-44	4	44.5	8
35-39	4	39.5	9
total	$N=20$		

ଶ୍ରେଣୀ ଆକାର $0x$ ଉପରେ ହିଁ ଆବୃତ୍ତତା 10 ଥର = 5 ଶ୍ରେଣୀ
 ଉପରେ $0y$ ଉପରେ ହିଁ ଆବୃତ୍ତତା 10 ଥର = 5 ଶ୍ରେଣୀ ସିଦ୍ଧ
 ହେବାରୁ ଉପରୋକ୍ତ ଉପାଦାନ ଉପରେ ହେବ ।

Dr. N. K. Jaiswal



संख्या अक्ष

Head
Deptt. of Education
H.C.D.G. College, Patnaipukur

Ex 8.

CI	ଆବୃତ୍ତତା (Frequency)	କ୍ଷେତ୍ର ମଧ୍ୟମ ଅବସ୍ଥା	ମୂଳୀ ବା. ସା. ସଂଖ୍ୟା	ମୂଳୀ ପ୍ରା. %
85 - 89	2	89.5	20	100%
80 - 84	2	84.5	18	90%
75 - 79	2	79.5	16	80%
70 - 74	0	74.5	14	70%
65 - 69	2	69.5	14	70%
60 - 64	0	64.5	12	60%
55 - 59	0	59.5	12	60%
50 - 54	1	54.5	12	60%
45 - 49	3	49.5	11	55%
40 - 44	4	44.5	8	40%
35 - 39	4	39.5	4	20%
total	N: 20			

କ୍ଷେତ୍ର ମଧ୍ୟମ $0x$ ଉପରେ କ୍ରମ ସଂଗଠିତ 10 ବର୍ଷ = 5 ବର୍ଷ
 ଉପରେ $0y$ ଉପରେ କ୍ରମ ସଂଗଠିତ 10 ବର୍ଷ = 10 ବର୍ଷ
 କିମ୍ପାକ୍ଷେତ୍ର କି ମୂଳୀ ମଧ୍ୟମ ଉପରେ କ୍ରମ ସଂଗଠିତ ବର୍ଷ
 ହିଲ ।

Signature
 12/11/22
 Head
 Dept. of Education
 N.C.D.C. College, Nitaipukhuri